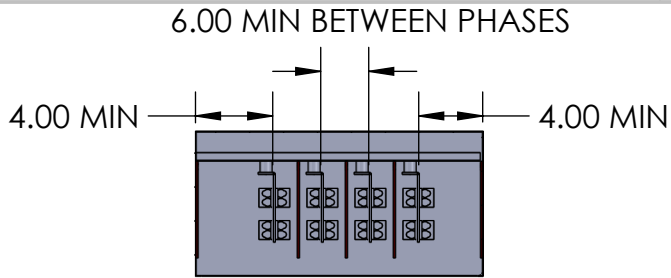


2

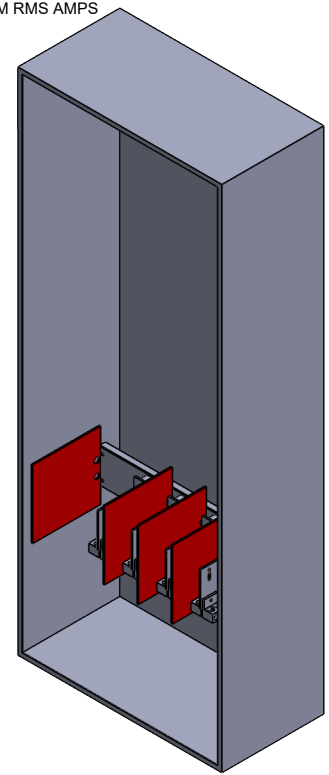
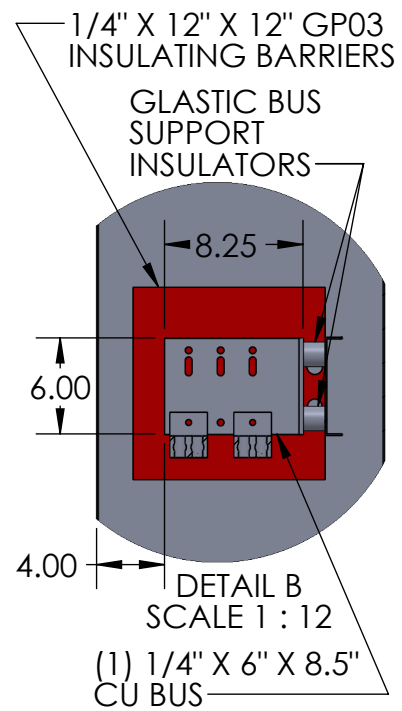
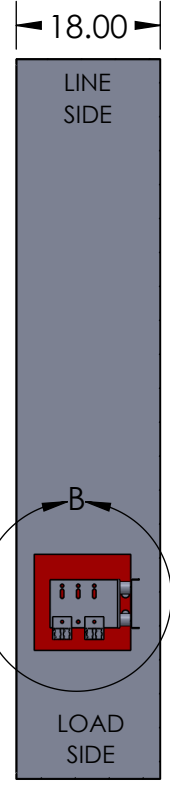
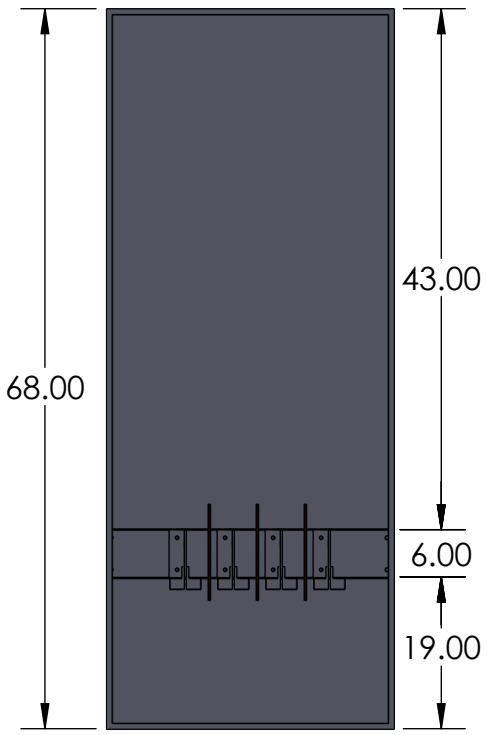
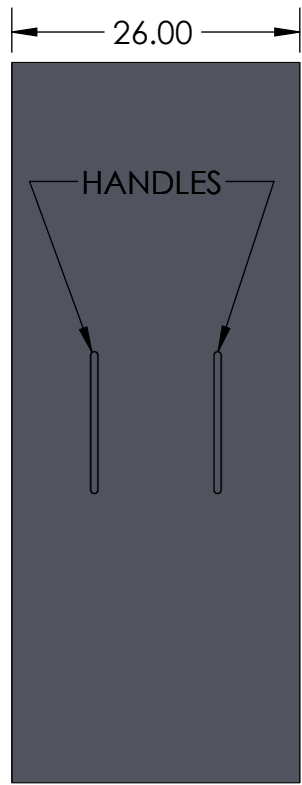
1



NOTES:

1. BOX AND COVER CONSTRUCTION- GALV STEEL (12GA) FINISH: POWDER COAT GRAY ENAMEL
 2. BUS BARS- COPPER 98% CONDUCTIVITY
 3. BOX SHALL HAVE NAME PLATE WITH MANUFACTURER'S NAME
 4. FRONT COVER SHALL BE SEALABLE WITH (2) HANDLES
 5. LINE SIDE: PROVISIONS FOR (2) 600 MCM - LUGS NOT INCLUDED
 6. LOAD SIDE: MOUNT UP TO (5) 600 MCM - MECHANICAL LUGS INCLUDED
 7. NEMA 3R CONSTRUCTION INCLUDES SEAM WELDED BODY, OUTSIDE MOUNTING TABS ON ALL FOUR CORNERS, GASKETED COVERS
 8. "120/208V BLACK LABEL WITH WHITE LETTERING LOCATION ON INSIDE AND OUTSIDE OF THE ENCLOSURE
 9. FOR 120/208V SERVICE ONLY
 10. FOR 277/480V SERVICE SEE 348210-72-N3R OR 348211-96-N3R
- SHORT CIRCUIT CURRENT RATING 100,000 SYM RMS AMPS

B



B

A

			MATL: 12 GA GALV FINISH: ANSI 61 GREY POWDER COAT WEIGHT:		DRAWING TITLE: EO-68-N3R CUT SHEET PART #: NAV-EO-68-9072B-N3R	
155 MARCUS BLVD HAUPPAUGE, NEW YORK 11788 PH: (718) 257-2111 FAX: (718) 257-2626			UNLESS OTHERWISE SPECIFIED: 1. REMOVE ALL BURRS AND BREAK ALL SHARP EDGES .015 X 45° OR .015R 2. DIMENSIONAL LIMITS APPLY AFTER PLATING 3. MACHINED SURFACES EXCEPT AS NOTED		DESCRIPTION: NEMA 3R SERVICE ENTRANCE BOX 120/208V SERVICE UP TO 2 SETS LINE SIDE SPECIFIED TO CON ED EO-9072-B	
PROPRIETARY AND CONFIDENTIAL THE INFORMATION CONTAINED IN THIS DRAWING IS THE SOLE PROPERTY OF Nav-Tech Inc. ANY REPRODUCTION IN PART OR AS A WHOLE WITHOUT THE WRITTEN PERMISSION OF Nav-Tech Inc. IS PROHIBITED.			UNLESS OTHERWISE SPECIFIED: ALL DIMENSIONS ARE NOMINAL UNLESS EXPLICITLY SPECIFIED OTHERWISE		DO NOT SCALE DRAWING	
DRAWN BY: N. BOSETTI APPROVED BY:	NAME: N. BOSETTI DATE: 12/30/2025			SCALE: 1:24 SIZE: A SHEET: 1 OF 1 REV.: 7		

A

2

1